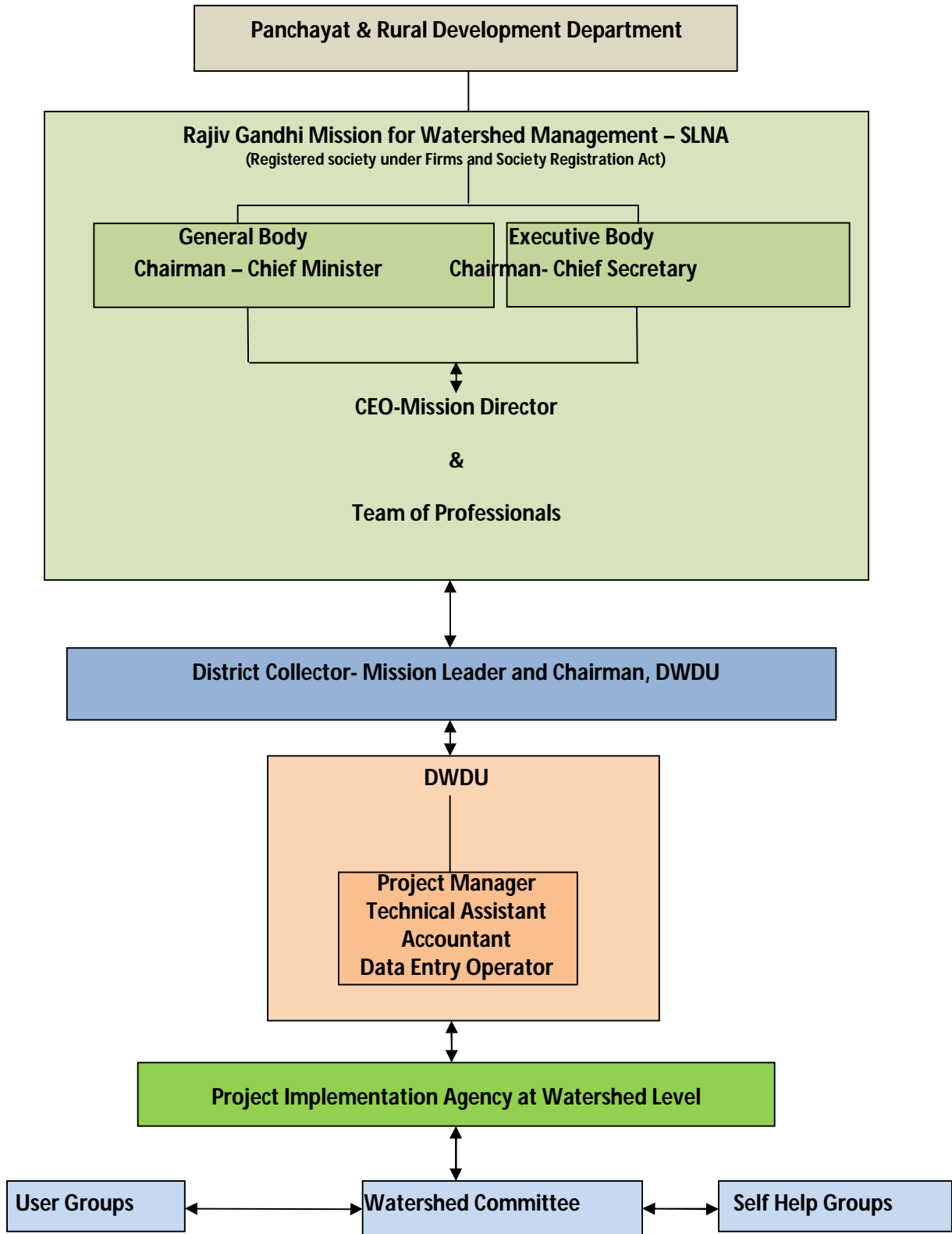


# CHAPTER - IX

## 9.0 INSTITUTIONAL ARRANGEMENT





## 9.1 SLNA

In Madhya Pradesh Rajiv Gandhi Mission for Watershed Management is notified as SLNA. The RGMWM has its General Body and Executive Body as per the provision of Firms and Society Registration Act. The membership of General Body and Executive Body of RGMWM is in accordance with the Common Watershed Guidelines- 2008. Hon'ble Chief Minister is Chairman of General Body and Chief Secretary, Government of Madhya Pradesh is Chairman of Executive Body of the RGMWM. The other details are as given below :-

**Table – SPSP 26 and 27 : Details of SLNA**

1	2	3	4
Date of Notification	Type of SLNA <sup>#</sup>	Date of MoU with DoLR	Total no. of members of SLNA
1950/1898/22/V-5/estt. dated 08/10/2008	Registered society under Firms and Society Registration Act.	-	15 - 20

5		6					
Chairperson of Executive Committee		CEO					
Name	Designation <sup>#</sup>	Name	Designation	Date of Appointment	Nature of appointment	Tenure (No. of years)	Contact Ph. No./ Fax/ E-mail
Shri Rakesh Sahni	Chief Secretary	Shri Umakant Umrao	Director	June-09	IAS	3 months	0755-2553171

In Madhya Pradesh Rajiv Gandhi Mission for Watershed Management (RGMWM) has already been the nodal agency at state level under Rural Development Department for implementation of DPAP & IWDP watershed projects since 1995. Thus the RGMWM has its state level office with basic institutional arrangement, which will be strengthened by appointing multi-disciplinary team of professional experts and other requisite staff, so as to perform the function of SLNA.

The state office of RGMWM has its MIS cell headed by a Programmer. At present MIS cell of RGMWM is doing online entry at state level as directed by Gol-DoLR. The MIS cell of RGMWM will be strengthening to function as SLDC.

**Table-SPSP 28: Details of functionaries in the SLNA funded by DoLR- Nil**

**Table-SPSP 29 : Details of State Level Data Cell (SLDC) functionaries – Nil**

## **9.2 DISTRICT LEVEL WATERSHED UNITS**

At present the RGMWM is operating through a "watershed cell" at the level of Zila Panchayat in each district. These watershed cell have been constituted by appointing 1 Project Officer or Project Coordinator or Asst. Project Officer and 1 Office Assistant. Therefore existing Watershed Cell will be strengthening for setting up of DWDU as directed by Gol-DoLR. The appointments in DWDU will be done and their Bank Account will be opened after budget estimate for constituting DWDU is approved by Gol-DoLR. **It is proposed to establish DWDU in all the 50 districts of Madhya Pradesh.** The MIS cell of RGMWM at state level is already collecting on-line information from Watershed Cell/Proposed DWDU of ZPs.

**Table-SPSP 30: Details of functionaries in the DWDU funded by DoLR- Nil**

## **9.3 PIA AND WDT**

- 9.4** For each of the selected cluster of micro watersheds a Project Implementation Agency (PIA) will be appointed from government line department. A team of subject matter specialists appointed on contract may also be designated as PIA. Each PIA will have one Project Officer. The Project Officer will be assisted by a multidisciplinary watershed development team (WDT) consisting of different subject matter specialists (Irrigation, Public Health Engineering, Forest, Agriculture, Horticulture, Sericulture, Animal Husbandry etc.), drawn either from various line department of Government or Non Government Organisations (NGO's).

## **9.5 INSTITUTIONAL ARRANGEMENT AT VILLAGE LEVEL**

At village level community will be organised into groups to establish participative structures, with common problems and concerns, which can act as vehicle for resource support, community action and conflict resolution. These groups will be established to enable the community to organise itself to manage the entire process of watershed management. The groups will carry out various activities from planning of watershed management activities, its execution and maintenance. They will also decide on the modalities for group functioning, distribution of any incomes/resources and conflict resolution. The following groups are proposed to be established :-

- User Group** - The groups of landowners who will have direct effect of watershed management activities. For each of the identified watershed development activity like soil conservation, water conservation, horticulture, fodder development etc. on private land, community land and government land, such groups will be constituted.
- Self Help Group** - These will be groups of individuals who may not be holding land and may not get benefit directly from the watershed development works. Such individuals who wish to act collectively and are willing to organise themselves will be organised into SHGs and linked with income generating activities with well defined forward and backward linkages to sustain their livelihood.
- Women's Group** - Women as a distinct group form a priority area for the programme as land and water related issues affect them the most. Therefore women's self help groups in all programme villages will also be promoted.
- Watershed Committee** - This is the body, which will act as the Executive committee to manage the day-to-day affairs of the watershed at village level and facilitate the participation of the entire village community. It will have representation from all user groups, self help groups, women and representatives of the PIA's. One full time Secretary will be appointed with each Watershed Committee to assist in their responsibilities.